



ST. PETER'S  
— SHIPLEY —

# ST PETER'S



## SUNDAY SERVICES

Sunday 25<sup>th</sup> January

9.30am All-In Service  
11.15am Morning Worship  
6.30pm Communion

Sunday 1<sup>st</sup> February

9.30am All-In Service  
11.5am Communion  
6.30pm Reset: Evening Worship

## CONTACT US

Office

office@stpetes.org.uk

Tel: 01274 400 381

Rev Natasha Thomas

natasha.thomas@stpetes.org.uk

Tel: 07887 707221

## THIS WEEK'S THEME

### Conversion of Paul

Acts 9: 1 - 21

Matthew 19: 27 - end

## THIS WEEK'S REFLECTION

This painting of Michelangelo's is a glorious one that shows the startling impact of the divine on Paul's life - that of chaos! We don't often think about that part of conversion and transformation, that brings us closer to God. I've more often thought about the gentle sense of time as a caterpillar creating its cocoon in order to emerge as a beautiful butterfly when thinking about these things, but this painting reminds me that in addition to beauty, boldness and truth, there is in addition serious disruption and chaos. God is in both.

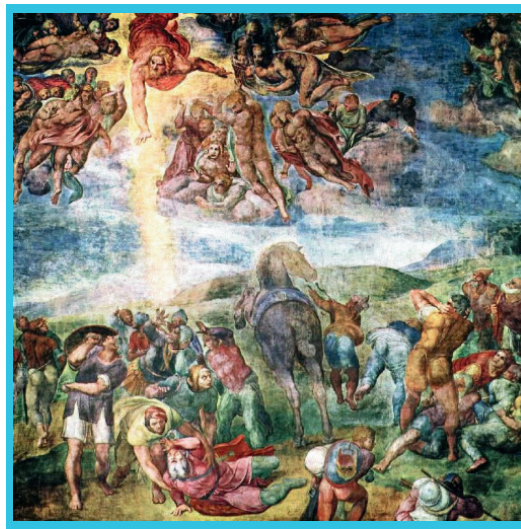
Perhaps the disruption that Paul experiences is absolutely needed, and I suppose that will also be true from time to time for us, if we are to fully change our lives around and follow Christ in the way that He wants us to, for after all we are to follow God and not the world. That means choosing to follow God over material things. But that disturbs the world as it is ordered. In the painting even the heavens are disrupted. The painting shows that God's intervention through the Holy Spirit is awesome power and this power brings about a total mind change in Paul. Paul now realises that everything that he thought he had been doing for God, was in fact against Him. That must have brought such a sense of guilt and shame, yet Paul doesn't allow this knowledge to reduce him, instead he strives to make amends. Amends that change the whole of the Christian world as it was then. His understanding of the love and grace of God ensures that all nations are brought into the potential of being part of God's chosen family. Paul's conversion brings a change in all that he is and does. This kind of conversion does not happen to everyone. Some of us find that our faith grows over time, deepening as we begin to develop our trust in God and we find our behaviour changes because we know and love God and understand that God loves us more than we can ever understand.

But it is a choice isn't it? to believe that we can really be acceptable. I wonder if it was necessary for Paul to be blind for a good few days in order for him to understand what was happening to him, and to feel the need to be dependent on God before he could be healed by the courageous Ananias. The reading from Matthew this week comes straight after the rich young man who wants to be a disciple of Jesus, but can't quite give up his worldly ways in order to do so. I wonder if there are things that are blocking our full potential in living with God, because we can't quite let go of them. We need to find tools to help us to grow and we need to ask the Spirit to help us.

In the Discipleship team we have been looking into Prayer bands (similar to Prayer Triplets) which encourage people to form groups of 3-4 to meet weekly to pray together for no more than an hour. I believe that this kind of discipline can and will transform us and help us to grow in the power of the Holy Spirit to bring love and life to Shipley.

If you would like to give this challenge a go, you can sign up at the back of church so that we can put you into a group, or you can identify your own group if you want to (options will be available) or you may wish to be part of a group of people that you do not know perhaps from different congregations.

Rev Natasha Thomas



## Launching Prayer Bands

Having trusted friends to pray with is a wonderful way to grow in discipleship and self awareness. So we would like to provide the opportunity for members of the congregations to join a group of between 3-5 people who meet weekly to pray for each other, using 5 questions as a guide. We suggest using online meetings such as WhatsApp video or Zoom links, so this does not feel too much of a commitment. If you would like to be part of such a group please sign up at the back of church.



### Volunteers Needed to Pray at Wrestling Church FRIDAY 30th January at 6.30pm!

#### Calling All New People!!!

If you are fairly new at St Peter's or for what ever reason you are unsure as to how to get involved or contribute to aspects of our service, you are very warmly invited to the Vicarage for a cream team and lots of chat! on Sunday 8th February between 2 and 4pm (2 Glenhurst Rd, Saltaire, BD18 4DZ).

#### SAVE THE DATE!

The 3 Anglican BD18 Churches plan to go away to Rydal Hall in the Lakes together and we would love as many of us to go as possible - 10-12<sup>th</sup> July 2026. See Natasha or Frances for more info.

#### Coming Up at St Peter's...

**The Jam Club** - Tuesday 27<sup>th</sup> January, 3.30pm, Youth Hub

**Alpha Taster Session** - Thursday 29<sup>th</sup> January, 6.30am, Hope Chapel

**Wrestling Church** - Friday 30<sup>th</sup> January, 6.30pm (doors open at 6pm), Church

**Worship Meeting** - Saturday 31<sup>st</sup> January, 10.30am, Church

**Welcome All Newbies and Others!** - Sunday 8<sup>th</sup> Feb, 2-4pm at the Vicarage

#### SAFEGUARDING

If you have any safeguarding concerns please contact our safeguarding officer:  
Frances Vose -  
[safeguarding@stpetes.org.uk](mailto:safeguarding@stpetes.org.uk)

#### PASTORAL SUPPORT

For prayer or support, please email:  
[pastoralsupport@stpetes.org.uk](mailto:pastoralsupport@stpetes.org.uk)

### Alpha

Do you have questions about God? Do you have a friend who might be interested but isn't sure? Come and invite your friend to our Alpha Taster Session on **Thursday 29<sup>th</sup> January, 6.30pm in Hope Chapel**. Volunteers are urgently needed to meal prep for the 10-week Alpha Course on the following dates: 29<sup>th</sup> January, 5<sup>th</sup>, 12<sup>th</sup>, 26<sup>th</sup> February, 5<sup>th</sup>, 19<sup>th</sup>, 26<sup>th</sup> March and 2<sup>nd</sup> April. Meals need to be delivered by 6.30pm on the respective day. Please contact the office, Joseph or Natasha if you can help.



Do you play an instrument? Do you like to sing?

If you play an instrument or sing and have wondered about being involved in musical worship on a Sunday, then please do join us on **Saturday 31<sup>st</sup> January at 10.30am**, to see how you can be involved and how we can shape our worship going forward into 2026.



### Eco Tips

Don't use foil for cooking.  
Wherever possible use a container with a lid that can be reused. Aluminium is a rare metal whose extraction and purification uses a lot of energy!

### School Governors

If anyone is interested in becoming a Governor at Wycliffe CE Primary School or Shipley CE Primary School, please contact Rev Brian Greenfield for more information ([revd.brian.greenfield@gmail.com](mailto:revd.brian.greenfield@gmail.com)).

### Live @ Avondale Club

**Sunday 25th January, 7.30-9.30pm with May Contain Notes**

Music, good conversations and a dash of faith. Pay as You Feel (£5 minimum suggested for those with an income), with alcoholic and soft drinks available for purchase. A safe space to bring non-Christian friends and neighbours.

**The Avondale Club, 19 Bradford Road, Shipley, BD18 3PJ**

### Prayers for People

Please continue to pray for Mandy Thorlby's parents, Helen & Mark, after Helen had a stroke and is still in hospital. Please also continue to remember and pray for members of our church who due to old age and disability are no longer able to attend church services, particularly, Ursula, John, Pam, Mary, Hazel and Christine.

### Saturday Prayers

All are welcome to join us for half an hour of online prayers on Zoom as we pray for ourselves, the church, the community and the wider world - **Saturday 24<sup>th</sup> January, 10am**. For more information or to pass on a prayer request, please contact [gemma.richards@stpetes.org.uk](mailto:gemma.richards@stpetes.org.uk).

<https://uso4web.zoom.us/j/77061467427?pwd=K1ibVijUFqN3T8cxOrdsYSONb7h2kj.1>  
Meeting ID: 770 6146 7427 Passcode: hello